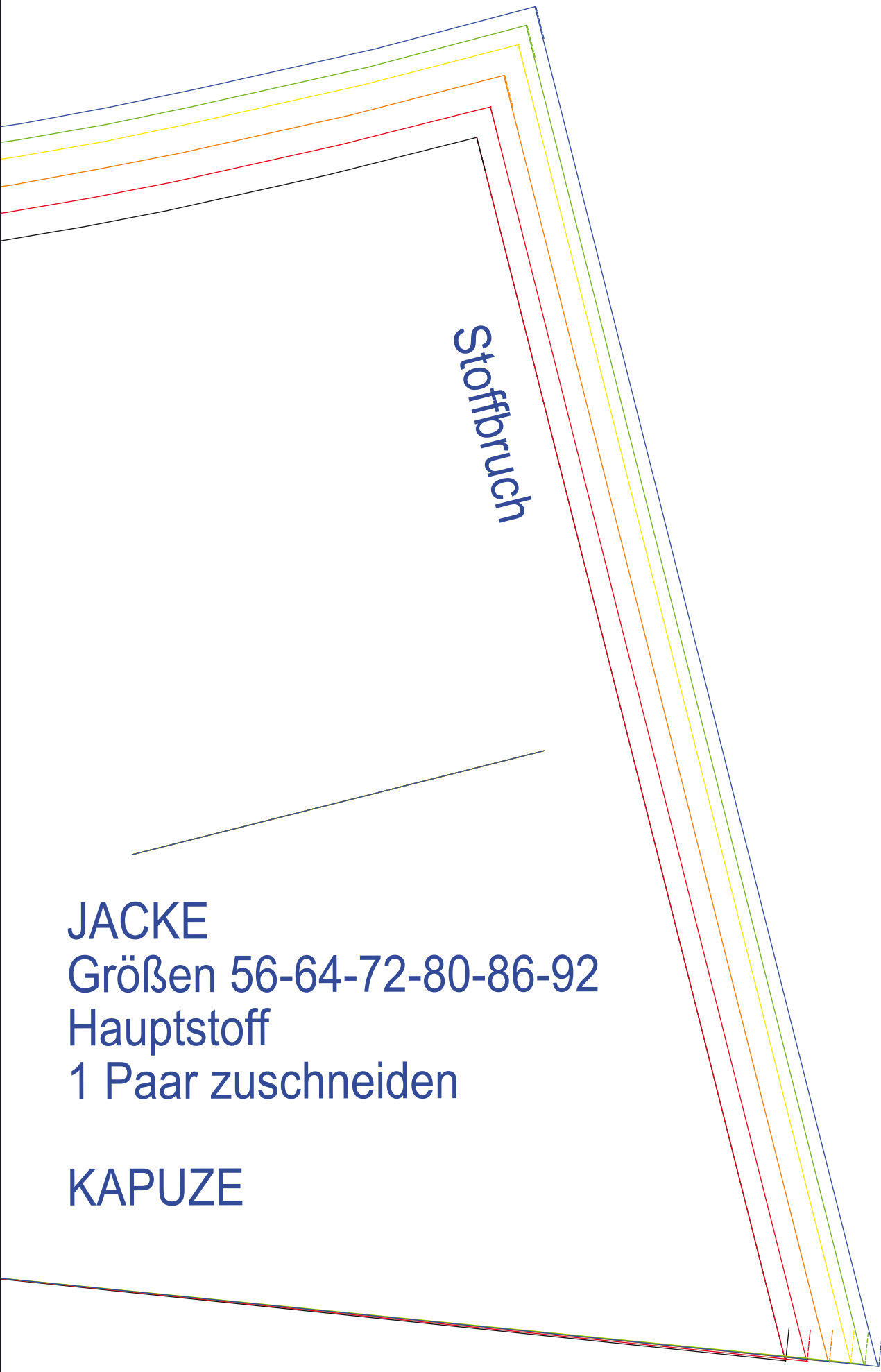


# Avalana Jacke

-Stoffe und Schnitte von STOF fabrics

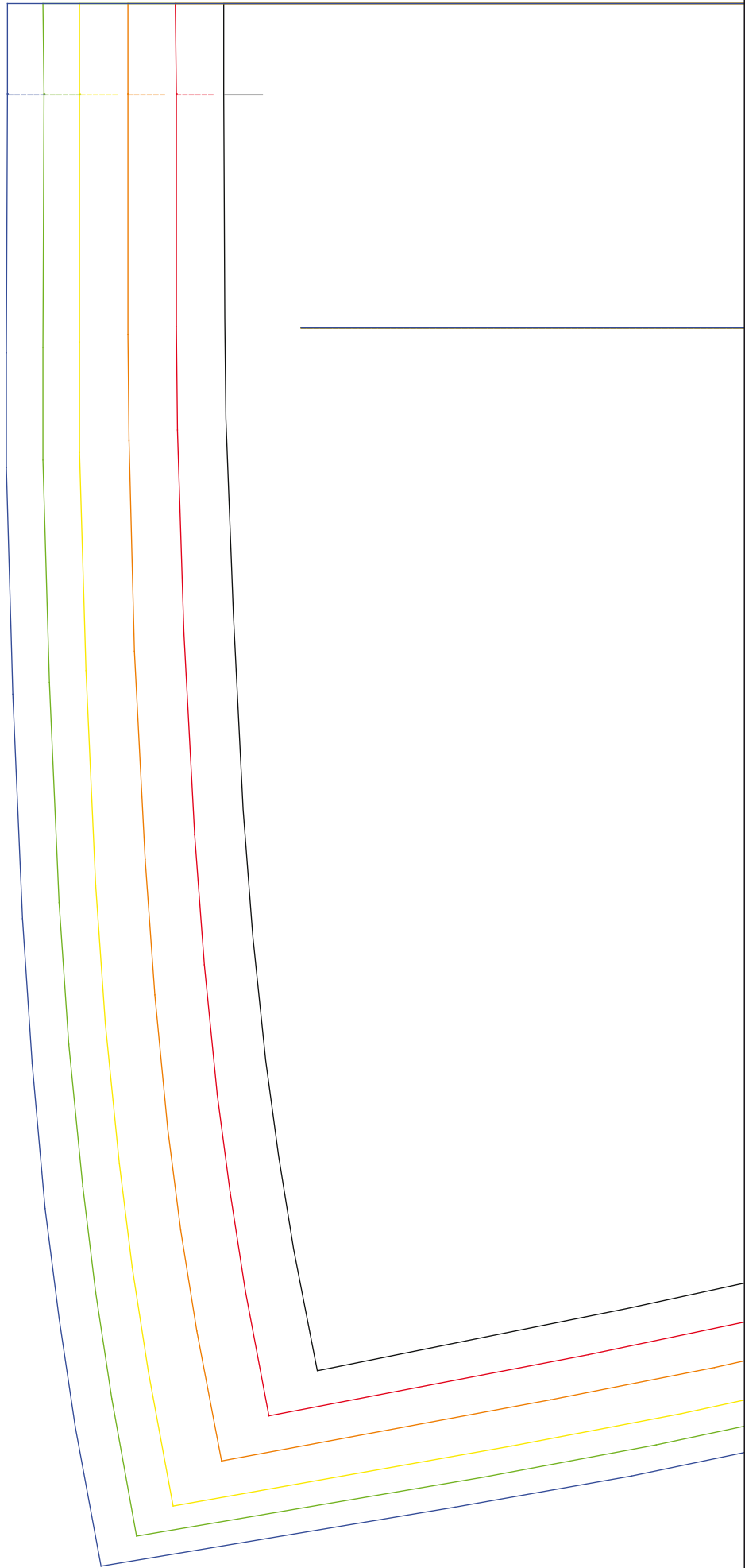




Stoffbruch

JACKE  
Größen 56-64-72-80-86-92  
Hauptstoff  
1 Paar zuschneiden

KAPUZE



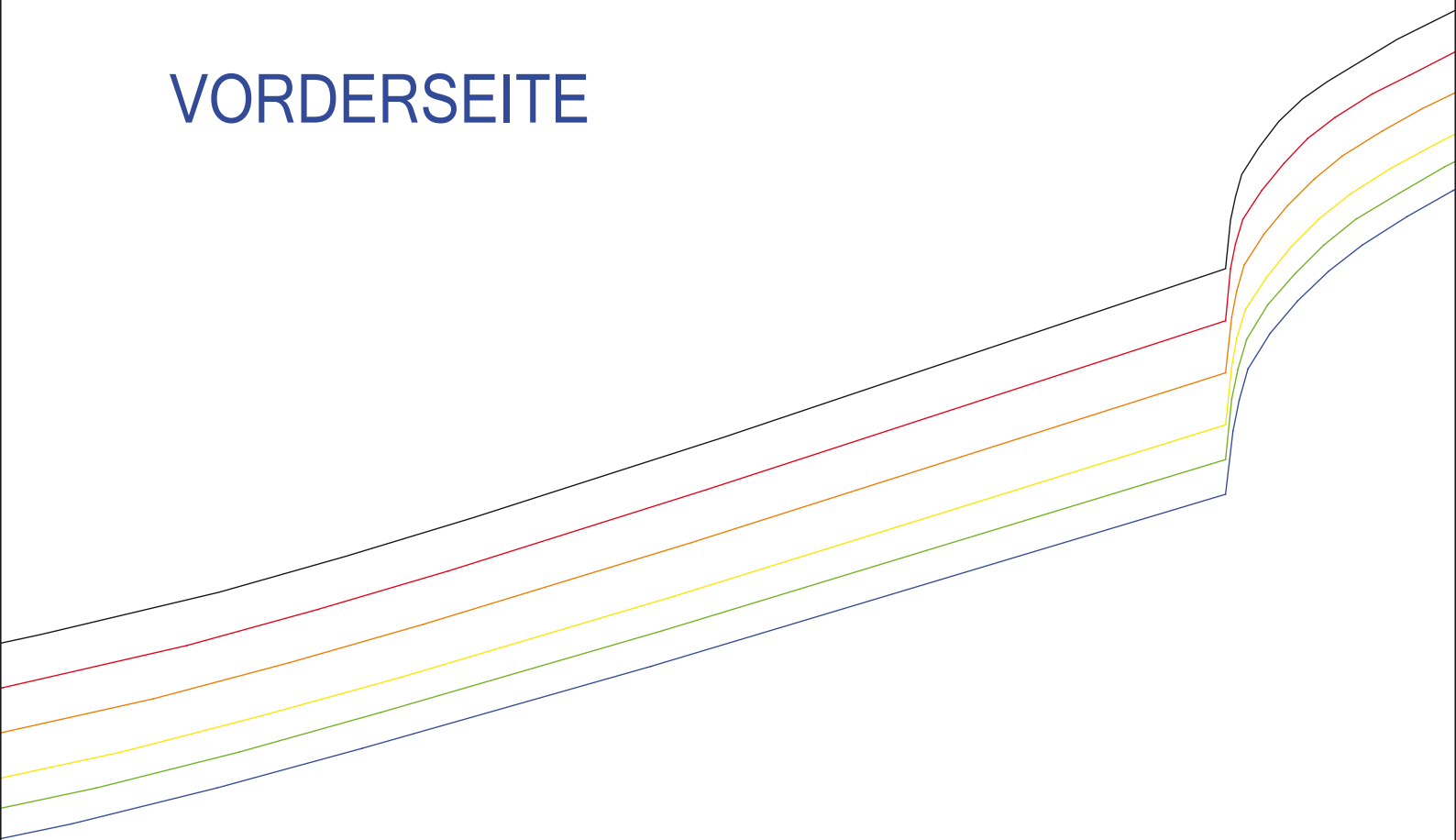
JACKE

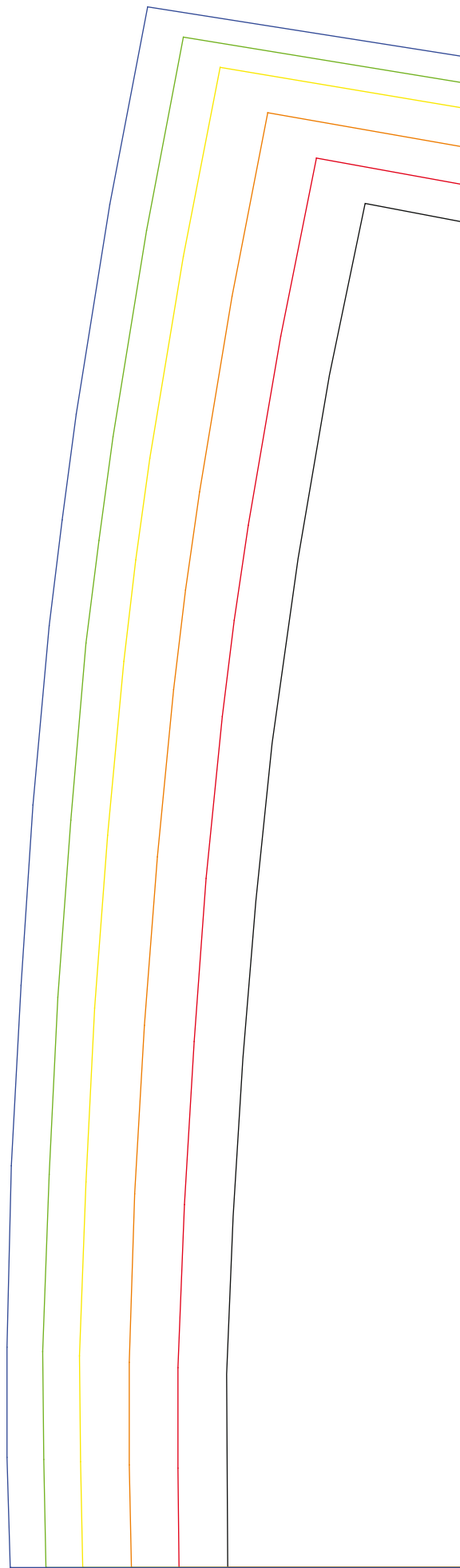
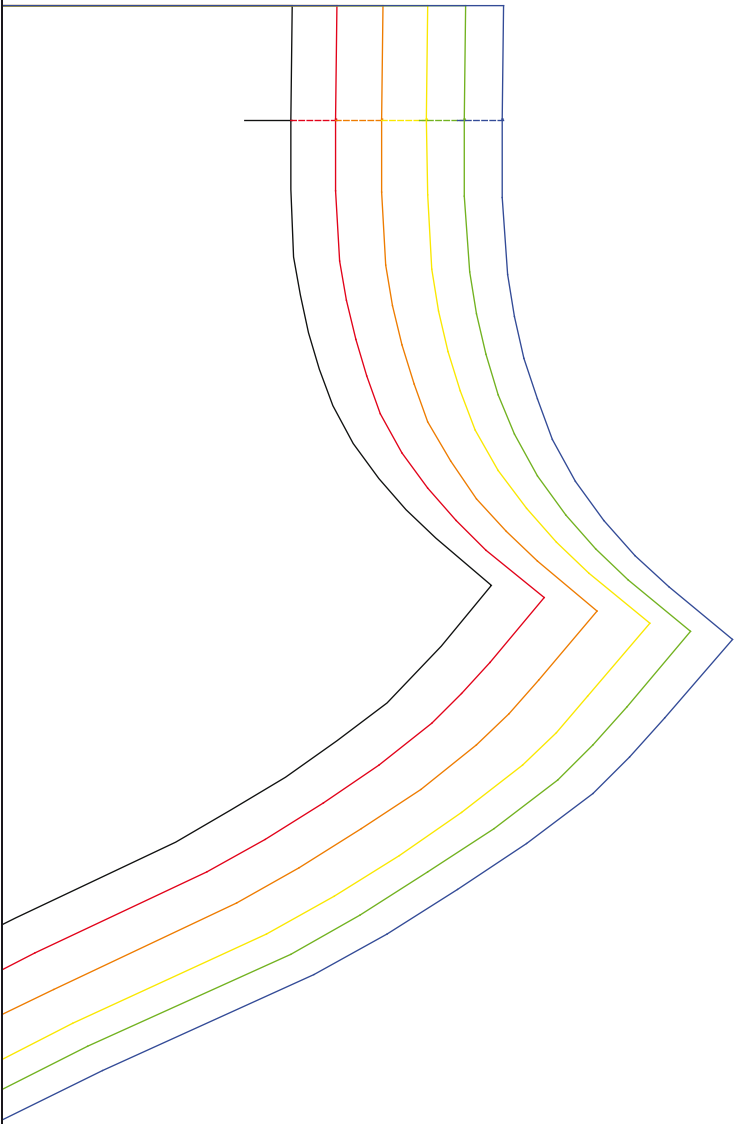
Größen 56-64-72-80-86-92

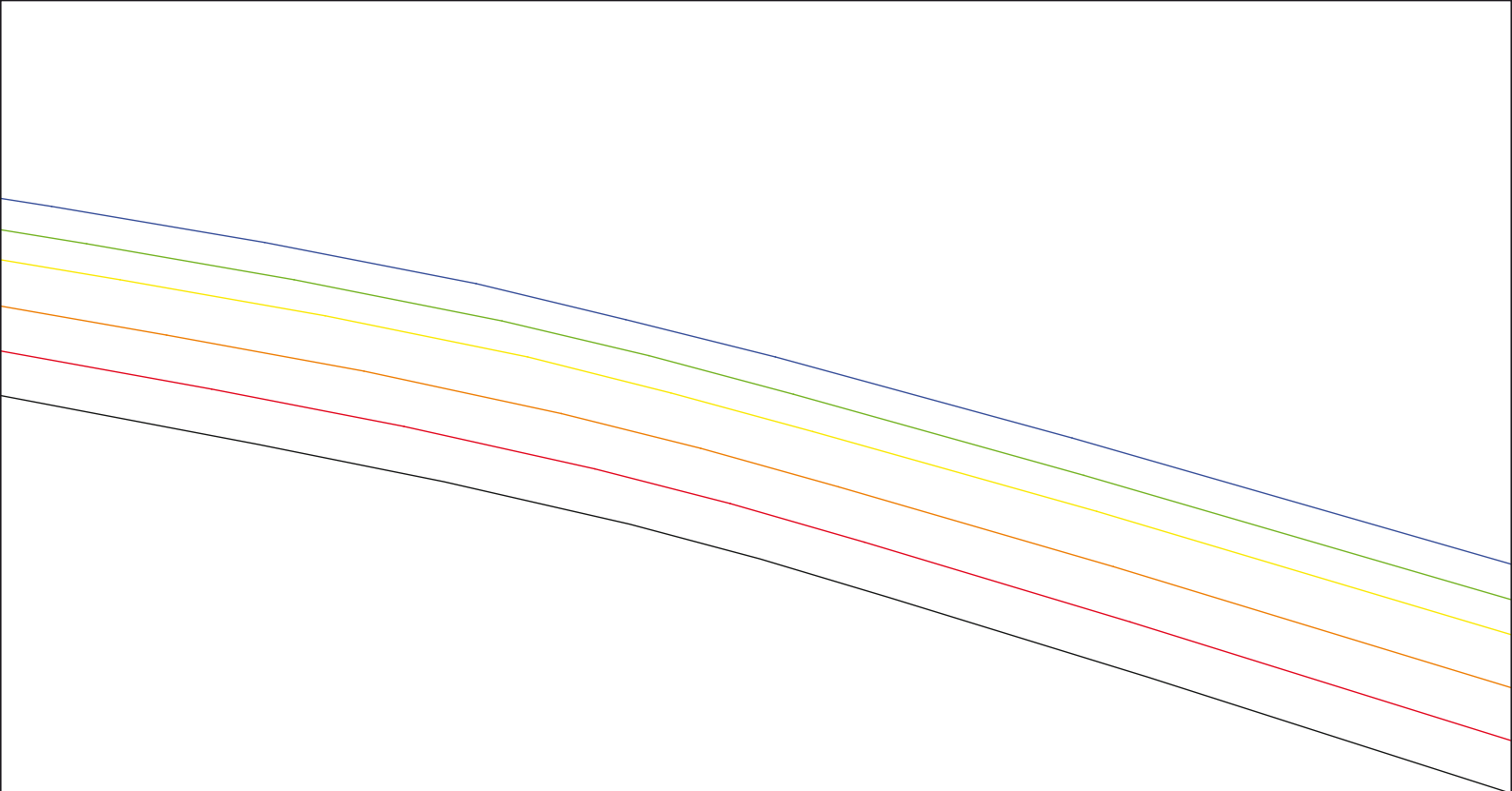
Hauptstoff

1 Paar zuschneiden

VORDERSEITE





The top of the page features five parallel lines sloping downwards from left to right. From top to bottom, the colors are blue, green, yellow, orange, and red. A black line is also present, sloping downwards from left to right, positioned below the colored lines.

JACKE  
Größen 56-64-72-80-86-92  
Hauptstoff  
1 Paar zuschneiden

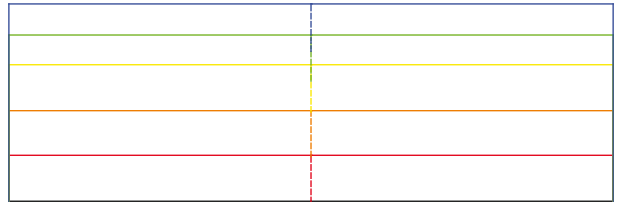
RÜCKSEITE

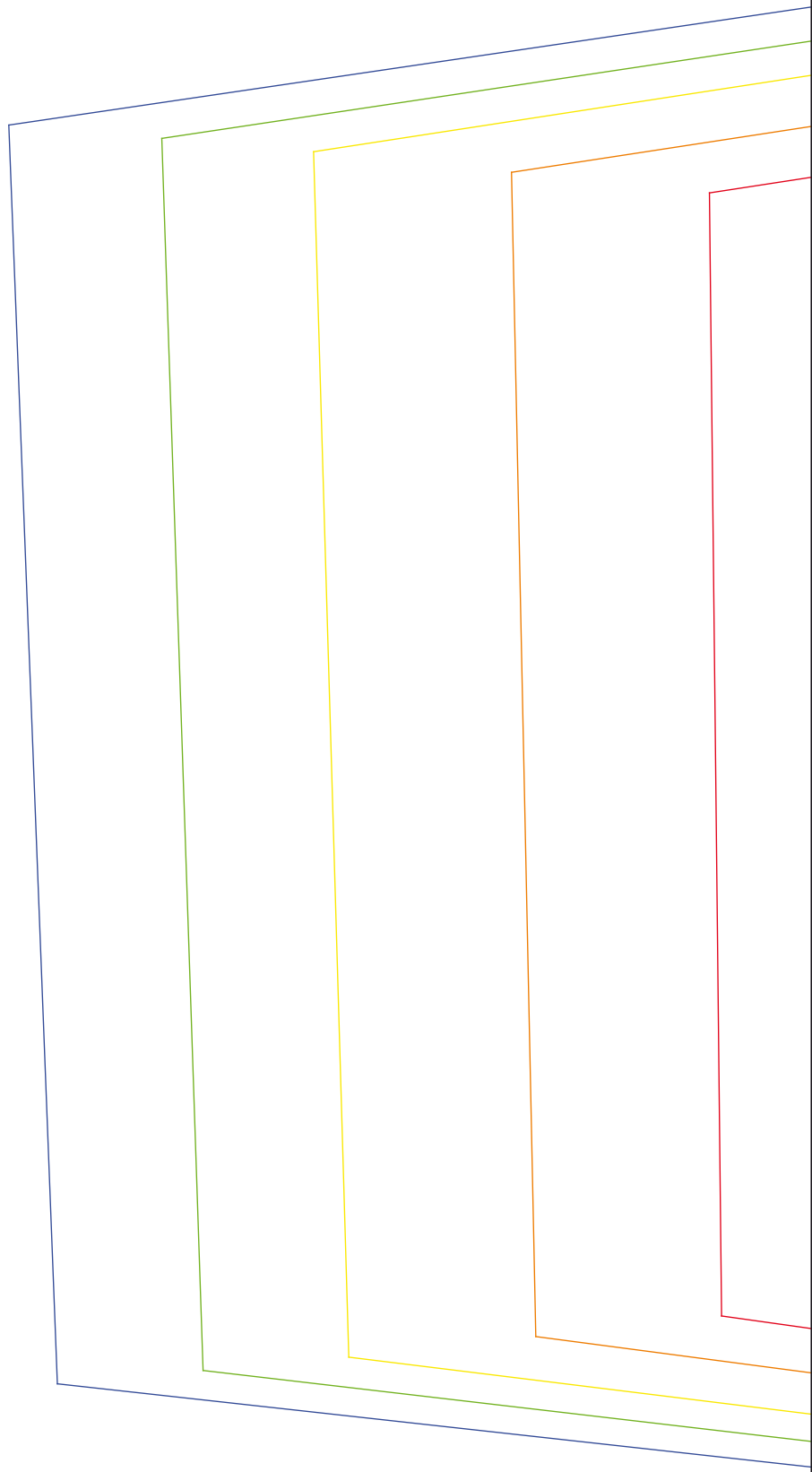
---

Stoffbruch



**SWEATSHIRT/KLEID**  
**Größen 56-64-72-80-86-92**  
**Bündchen**  
**1 Paar zuschneiden**  
**ÄRMELBÜNDCHEN**

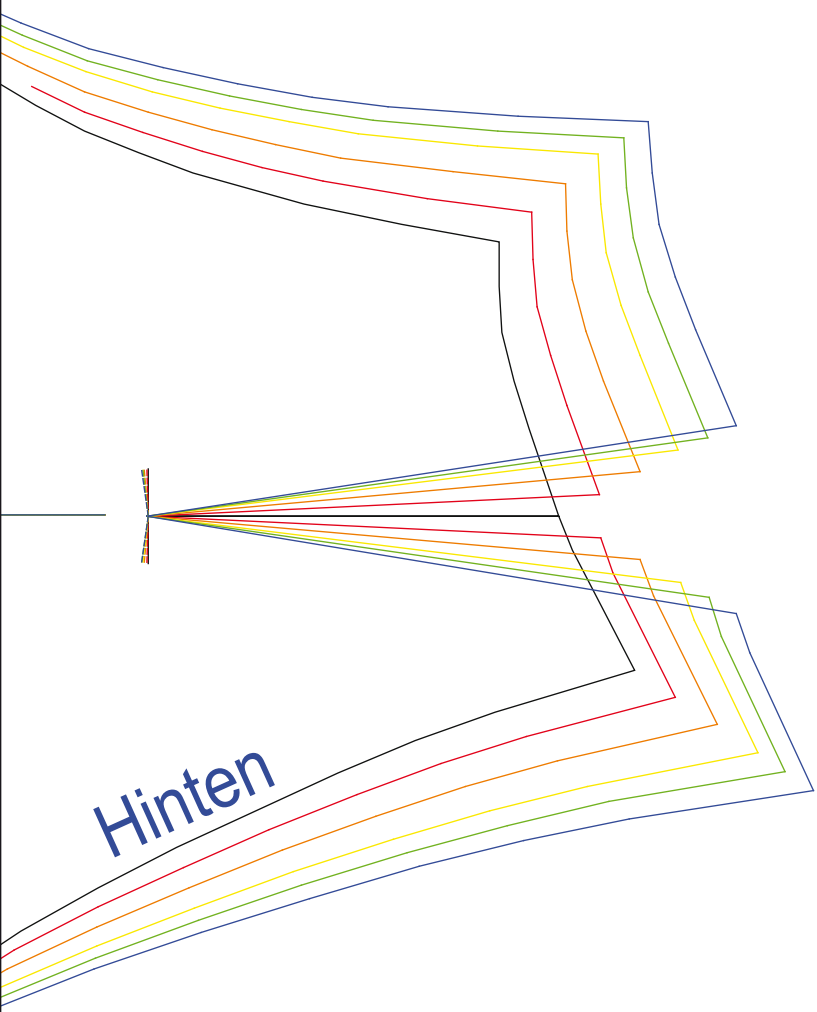






SWEATSHIRT/ KLEID/ JACKE  
Größen 56-64-72-80-86-92  
Hauptstoff  
1Paar zuschneiden

ÄRMEL



Hinten